



Corporate Profile
ZEXELON CO., LTD.



MESSAGE

ZEXELON is the company that is always
at the forefront of dynamic environments
where **everyone** can connect to
networks **anywhere** and at **any time**

ZEXELON

As an ICT total solutions company, ZEXELON proposes optimal solutions to customers by innovating and combining the various services, knowledge, and technology, we have accumulated and that can only be found in a communications device manufacturer. We firmly believe that we are able to provide new opportunities and tailor-made, innovative solutions that best suit the diverse business needs of our different customers.

Since our founding, we have steadily expended both our business and it's reach into a growing number of business areas. We have done so via the creation of original, innovative technology based on our leading-edge capabilities as a communications devices manufacture.

Currently, we are developing a diverse array of businesses as an ICT total solutions company. These range across areas such as: network device development, design, production and sales, to OEM and ODM, ISP, the construction of telecommunication installations, the construction of electric installations, maintenance support and personnel support.

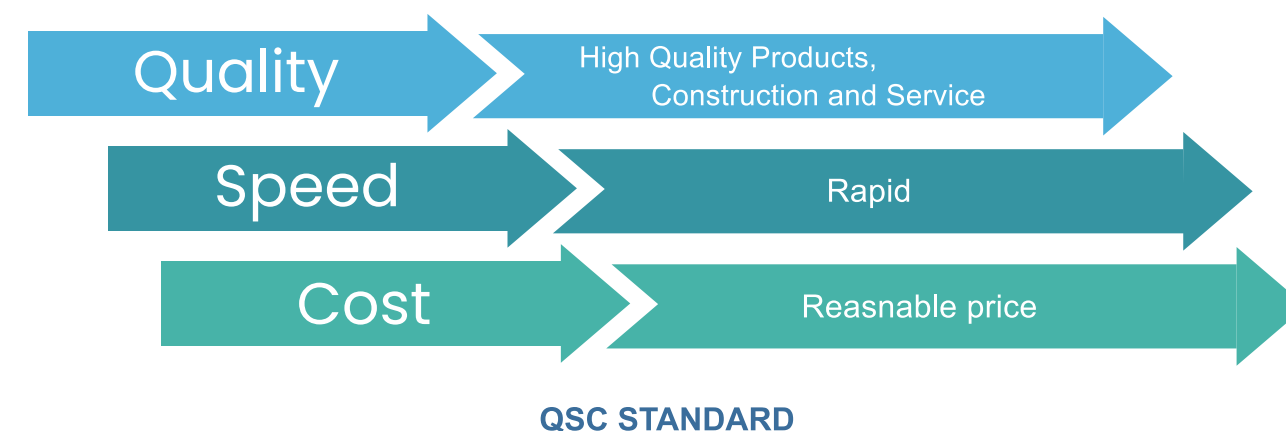
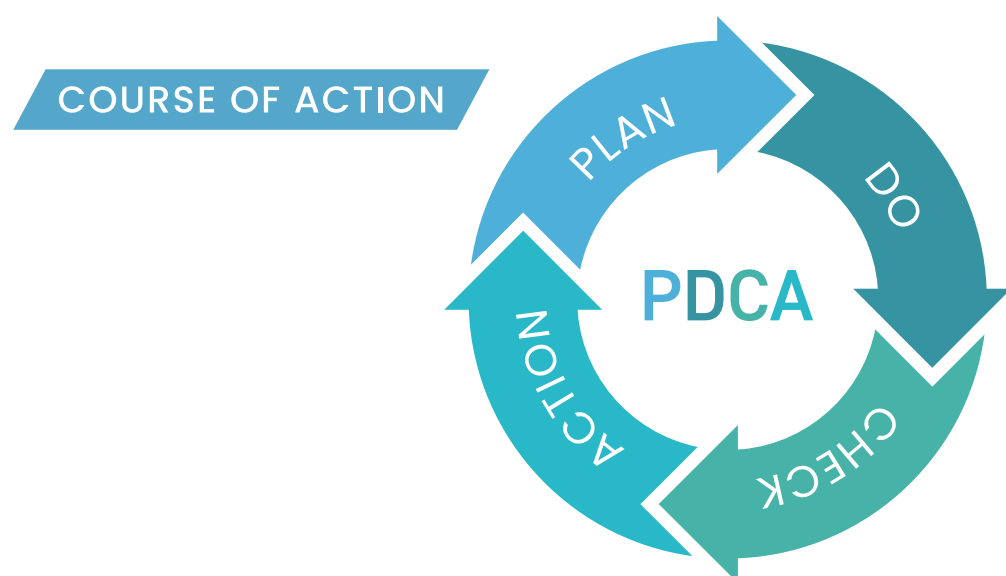
We continue to work vigorously as a corporate group, in order to further evolve as a dynamic, forward-looking company that will continue to provide first-class assistance and support to our customers in the future.

We thank you for your continued encouragement and support, going forward.



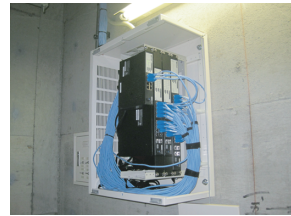
ZEXELON CO., LTD.
Chief Executive Officer

Kazuhiko Nakagawa



Solutions

*Networks and Communications Systems: We provide a wide range of services, from the design of PBX construction, business phones, and network architecture using LAN, Wi-Fi, and coaxial modems to maintenance support after installation or construction.



Fluke Networks®
OneTouch™ AT Network Assistant
1T-3000

*Shared Television and Autonomous Broadcasting Systems: We build autonomous broadcasting systems, using digital modulators and shared television systems for transmitting terrestrial, BS, and 110 degree CS digital signals in a variety of conditions and environments, according to the requirements of the client.



Fully equipped with testers

Maspro Denkoh (Corp.)
Digital Level Checker
LCV4A



*Vending Machine Integrated Free Wi-Fi Spots: We provide services ranging from the installation of vending machine integrated free Wi-Fi spots to maintenance support. Because these can easily be used in break areas, they will not only improve shop appearance, but also help to attract customers and create repeat customers.



Fully equipped with testers and tools

ekahau® ekahau Pro™ Site survey tool
Fluke Networks® AirCheck™ Wi-Fi Tester

*Security and Surveillance Systems: We build systems in accordance with every demand of the customer, regardless of whether it's for local or remote surveillance systems or security systems, for construction sites or established buildings.



Network and Shared Television Device Development, Design, Production, and Sale

*Development, Design, Production, and Sale: We develop, design, produce, and sell network and shared television devices under the company brand.



*OEM and ODM: We handle every client need, from the development of video, voice, and network devices to their production.



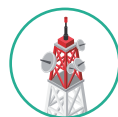
Network and Shared Television Device Development, Design, Production, and Sale



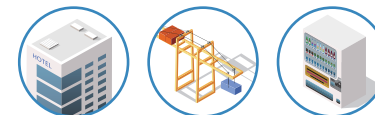
ISP



Construction of Telecommunications Installations



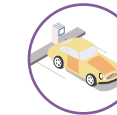
Solutions



Business Support (Personnel Support)



Construction of Electric Installations



Business Support (Personnel Support)

*Personnel Support: We provide broad personnel support in the communications and IT fields, for software development, voice and server based networks, and cell tower related areas.



Construction of Electric Installations

*Construction of Electric Installations: We construct electric installations, e.g. via our business promoting recharging infrastructure for next generation cars, and provide maintenance support.



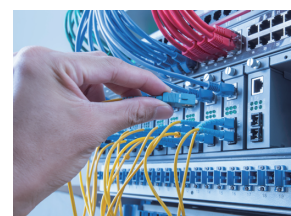
ISP

*ISP (Internet Service Provider): We work as a provider for corporate entities such as: clinics and hospitals, bathing lodging establishments and other recreational facilities. Select plans in accordance with your needs, from plans only for general internet connections to plans with maintenance support.

ZEXELON 
With NTT 東日本

ZEXELON 
With NTT 西日本

*Construction of Networks, Business Phones, and PBXs: We construct networks, business phones, and PBXs for offices and facilities.



Construction of Telecommunications Installations

*Service Integration and Home Construction: We perform construction work for NTT Group phones, the activation and removal of optical lines, and communications installation work in individual homes and offices.



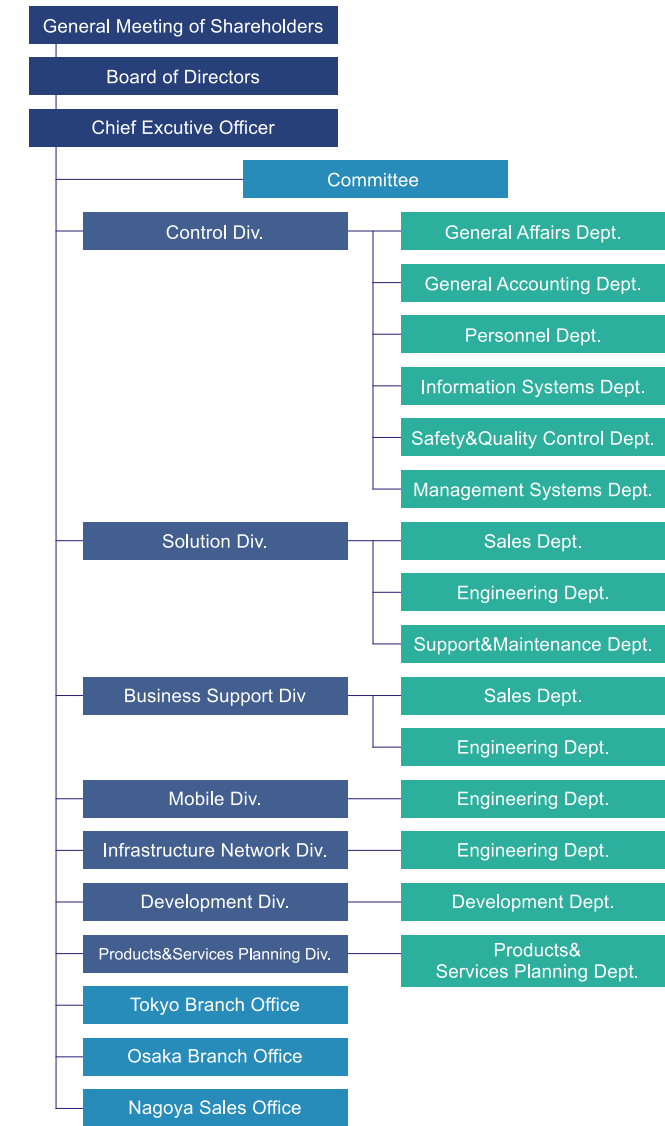
*Mobile Network Related Construction: We construct disaster prevention administrative radio and general mobile network related structures for carriers.



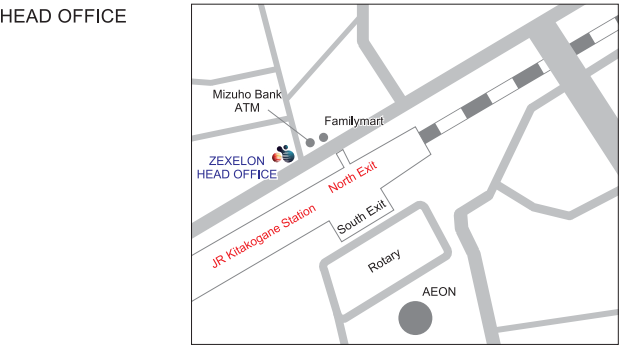
Company Profile

Company Name	ZEXELON CO., LTD.
Office Location	< HEAD OFFICE > 195 Tonohiraga, Matsudo-City, Chiba, 270-0004 Tel : +81-47-394-3400 Fax : +81-47-394-3402 < TOKYO BRANCH OFFICE > 2-4-5 Kajicho, Chiyoda-ku, Tokyo, 101-0044 Tel : +81-3-3526-2875 Fax : +81-3-6303-4566 < OSAKA BRANCH OFFICE > 1-3-9 Minamisenba, Chuo-ku, Osaka-City, Osaka, 542-0081 Tel : +81-6-6210-4571 Fax : +81-6-6210-4572 < NAGOYA SALES OFFICE > 3-6-41 Marunouchi, Naka-ku, Nagoya-City, Aichi, 460-0002 Tel : +81-52-211-9315 < OKINAWA OFFICE > 3-35-10 Nodake, Ginowan-City, Okinawa, 460-0002
Adress	https://www.zexelon.co.jp
Foundation	November, 2006
Capital	99 million yen
Representative	Chief Executive Officer Kazuhiko Nakagawa
Subsidiary	Z LINK CO., LTD., Z MEDICARE CO., LTD.

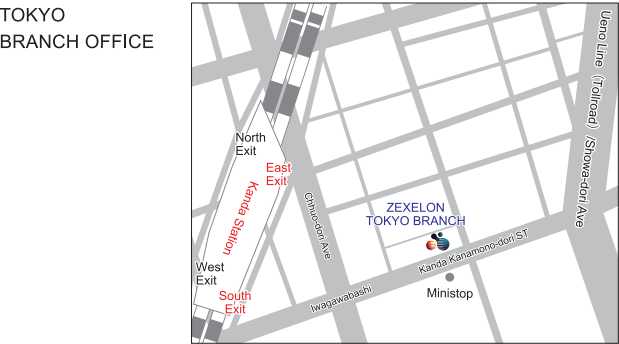
Organization Chart



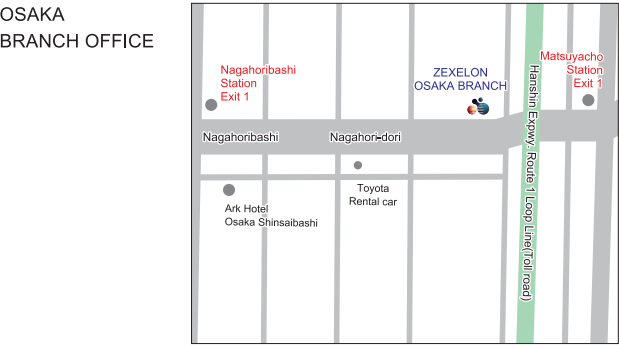
Access



1-minute walk from the Kitakogane Station north exit



4-minute walk from the Kanda Station South exit



6-minute walk from the Nagahoribashi Station Exit 1



5-minute walk from the Hisayaodori Station Exit 2

License

Special Construction Business License: (Special-5) 49101
Telecommunication
Ordinary Construction Business License: (Ordinary-5) 49101
Dredging, Earthwork and Concrete, Electrical, General Civil Engineering,
Masonry, Painting, Paving, Scaffolding, Steel Structure, Water and
Sewerage Facilities
Electric Constructor: Governor of Chiba 270004
ISO/IEC 27001(ISMS), ISO 9001(QMS): C0363761
Worker Dispatch Business License: Dispatch 12-300516
Paid Employment Placement Business License: 12-Yu-300447
Telcommunications Business License: A-22-11204
Secondhand Dealer Business License: 441070002147

Company History

Nov, 2006	Established Ubee Solution Co., Ltd.
Jun, 2007	With business expansion, separated from Ubee group company. and independently renamed 'Zexelon Co., Ltd.'
Jan, 2008	Established Shizuoka office
Jun, 2010	Secondhand Dealer Business License obtained
Jun, 2010	Entered into the Telecommunication business
Jun, 2010	Established Okinawa office
May, 2011	Relocated Shizuoka office to Mie, and established Mie office
May, 2011	Established Osaka office
Jul, 2011	Headquarters relocated
Jul, 2012	Increased capital to 10 million yen
Feb, 2013	Started specified worker dispatch business
Jun, 2013	Established Tokyo liaison office
Jul, 2013	Relocated Mie office to Aichi, and established Chubu office
Jul, 2013	Relocated Osaka office, and established Kinki office
Jan, 2014	Privacymark authorization obtained
Jan, 2014	Increased capital to 20 million yen
Mar, 2014	Ordinary Construction Business License (Telecommunication) obtained
Aug, 2014	Relocated Tokyo liaison office, and established Tokyo branch office
Dec, 2014	Paid Employment Placement Business License obtained
Jan, 2015	Chubu office relocated
Feb, 2015	Ordinary Construction Business License (Electrical) obtained
May, 2016	Worker Dispatch Business License obtained
Jun, 2016	Increased capital to 40 million yen
Jun, 2016	Acquired total stocks of Aphrodite Co., Ltd. (currently Z LINK CO., LTD.) and made it a 100% subsidiary
Jul, 2016	Tokyo branch office relocated
Apr, 2017	Ordinary Construction Business License (Dredging, Earthwork and Concrete, General Civil Engineering, Masonry, Painting, Paving, Scaffolding, Steel Structure, Water and Sewerage Facilities) obtained
May, 2017	Integrated Kinki office with Chubu office, and established Osaka branch office
Aug, 2017	Increased capital to 50 million yen
Jan, 2018	ISO/IEC 27001(ISMS), ISO 9001(QMS) authorization obtained
May, 2019	Special Construction Business License (Telecommunication) obtained
Mar, 2022	Estanblished Nagoya Sales Office
Feb, 2024	Increased capital to 99 million yen
Mar, 2024	Estanblished Z MEDICARE CO., LTD., a 100% subsidiary

Introduction and Construction Clients

Hotels

Many Hotel Chains in Japan
BEERSPARK SIMOTSUMA (Ibaraki)
Bettei Senjuan (Gunma)
Shousuke no Yado Takinoyu (Fukushima)
and more

Hospitals

Chibaken Saiseikai Narashino Hospital (Chiba)
Kikkoman General Hospital (Chiba)
Kitasato University Hospital (Kanagawa)
Matsudo City General Hospital (Chiba)

Miyazaki Medical Center Hospital (Miyazaki)
Namegata District General Hospital (Ibaraki)
National Cancer Center Hospital East (Chiba)
Ohira Medical Care Hospital (Fukuoka)
Tokatsu Tsujinaka Hospital (Chiba)
Tokyo Teishin Hospital (Tokyo)
Tsukuba Medical Center Hospital (Ibaraki)
Ushiku Aiwa General Hospital (Ibaraki)
and many other clinics and hospitals.

Main Business Partners

A-rise Corp.
Bridge Motion Tomorrow
Coca-Cola Bottlers Japan Inc.
COMLEAD
COMSYS ENGINEERING Corporation
COMSYS Mobile Corporation
Daiwa Densetsu Corp.
DOCOMO Support, Inc.
EXEO Engineering, Inc.
EXEO Group, Inc.
EXEO TECH CORPORATION
FFF SMART LIFE CONNECTED CORPORATION
Field 3 Corporation
FV Japan Co., Ltd.
Hospital Net Inc.
KAJIMA CORPORATION
Kanda Tsushinki Co.,Ltd.
KANDENKO CO., LTD.
Meisei Correspondence Co., LTD.
MIRAIT Mobile East Co.,Ltd.
MIRAIT ONE Corporation
MSK Technologies Co., Ltd
M's Frontier Co. ltd
NANGOKU INFORMATION SERVICE CO., LTD.
NDS-NETWORK Co., Ltd.
NEC Networks & System Integration Services, Ltd.
Nihon Digital Integrate Communication Service Corporation
NIPPON TELEGRAPH AND TELEPHONE EAST CORPORATION
NISSHO ELECTRONICS CORPORATION
NTT Advanced Technology Corporation
NTT-AT SYSTEMS Corporation
NTT CLARUTY CORPORATION
NTT Communications Corporation
NTT Com Engineering Corporation
NTT-ME CORPORATION
NTT Nexia CORPORATION
PARAMAUNT BED CO., LTD.
PERSJAPAN CO., LTD.
Relation CO., LTD.
S-FIT Co., Ltd.
SOGO MEDICAL CO., LTD
System Engineering Corporation
TOMEI TSUSHIN KOGYO CO., LTD
TSUKEN ACTIVE CORPORATION
U-NEXT Co., Ltd.
YAWATA ELECTRIC INDUSTRIAL CO., LTD.
and many other companies.



ZEXELON CO., LTD.

HEAD OFFICE	195 Tonohiraga, Matsudo-City, Chiba, 270-0004	Tel: +81-47-394-3400
TOKYO BRANCH OFFICE	2-4-5 Kajicho, Chiyoda-ku, Tokyo, 101-0044	Tel: +81-3-3526-2875
OSAKA BRANCH OFFICE	1-3-9 Minamisenba, Chuo-ku, Osaka-City, Osaka, 542-0081	Tel: +81-6-6210-4571
NAGOYA SALES OFFICE	3-6-41 Marunouchi, Naka-ku, Nagoya-City, Aichi, 460-0002	Tel: +81-52-211-9315
OKINAWA OFFICE	3-35-10 Nodake, Ginowan-City, Okinawa, 901-2203	



<https://www.zexelon.co.jp>

